

EnVision Manistee County Fact Book

Manistee County Community Foundation

Spring 2005



Population Characteristics



MANISTEE COUNTY
community foundationsm

Building a stronger, healthier community
For Good. For Ever.

 Northwest Michigan
Council of Governments

About this Report

EnVision Manistee County

The Manistee County Community Foundation, with collaboration from the Northwest Michigan Council of Governments, has embarked on an exciting new visioning initiative. EnVision Manistee County will provide the community a clear and unified focus recognizing the challenges and options facing Manistee County in the future.

An important component of EnVision Manistee County is the creation of a county-specific fact book. An Envision Manistee County Fact Book will provide the community baseline information about the county in order to identify past trends to make better decisions about the future.

The EnVision Manistee County Fact Book series will integrate environmental, economic, and social factors in a way that demonstrates the interconnectivity of issues impacting quality of life in Manistee County. These Fact Book indicator topics include:

- Arts, Culture, & Humanities
- Economy & Employment
- Health & Human Services
- Government & Infrastructure
- Natural Environment & Recreation
- Population Characteristics
- Youth & Education

Manistee County Community Foundation

The Manistee Community Foundation (MCCF) began in 1986 with the mission statement, “To enhance the quality of life in Manistee County- for now and forever.” Since then, MCCF has been integral in the community by establishing endowed funds specifically for the betterment of the community, the granting of such funds in order to meet specific community needs, and by being involved in a variety of community issues. More information about MCCF and its goals and outcomes can be accessed at: www.manisteefoundation.org.

Northwest Michigan Council of Governments

Founded in 1973, the Northwest Michigan Council of Governments (NWMCOG) facilitates and manages several programs for the ten counties in the Northwest Michigan region. These programs include Northwest Michigan Works!, Workforce Development Board, Northwest Michigan Small Business and Technical Development Center, Project Invest, the Procurement and Technical Assistance Program, the Regional Planning Department and the Regional Repository for US Census data. Additional information about NWMCOG can be accessed at: www.nwm.org.

Table of Contents

Introduction.....	4
Total Population	5
Sex & Age.....	7
Race	8
Incoming Migration.....	9
Population Forecast.....	12
Selected Population Data for Manistee County Townships & Places	13
Little River Band of Ottawa Indians.....	33

Introduction

Why are Population Characteristics important to Manistee County?

Manistee County population is growing and will continue to grow. A growing population will create changes in traffic, development patterns, new housing construction, sewer/water capacity, and environmental impacts. New jobs, spending patterns, and an increase in the tax base will also be created with a population increase.

Population growth will impact the level of sustainable growth and development in Manistee County. Balancing the impacts of an increase in population while protecting and preserving the quality of life for the people who live, work, and play in Manistee County will be an important responsibility for area residents.

What “facts” are there?

Population characteristics in this document are primarily derived from U.S. Census Bureau data. Little River Band of Indians information was obtained from a 2001 Tribal Census.

Total Population

- Manistee County’s total population was largest in 1900, when the U.S. Census Bureau estimated the population to be 27,856.
- According to the U.S. Census Bureau (2000) the total population of Manistee County was 24,527 in 2000. The Census Bureau recently estimated that Manistee County’s total population grew to 25,090 in 2004.
- Based on the Census Bureau’s estimates, the population of Manistee county grew by 2.3% from 2000—2004.
- Manistee County was the only county in Northwest Lower Michigan (Antrim, Benzie, Charlevoix, Emmet, Grand Traverse, Kalkaska, Leelanau, Manistee, Missaukee, and Wexford Counties) from 1980—1990 to lose population.
- From 1990–2000 Manistee County had the slowest percentage of growth (15.3%) in Northwest Lower Michigan. While Northwest Lower Michigan as a whole grew 21.9% during the same time span.

Table 1: Total Population, 1890–2000

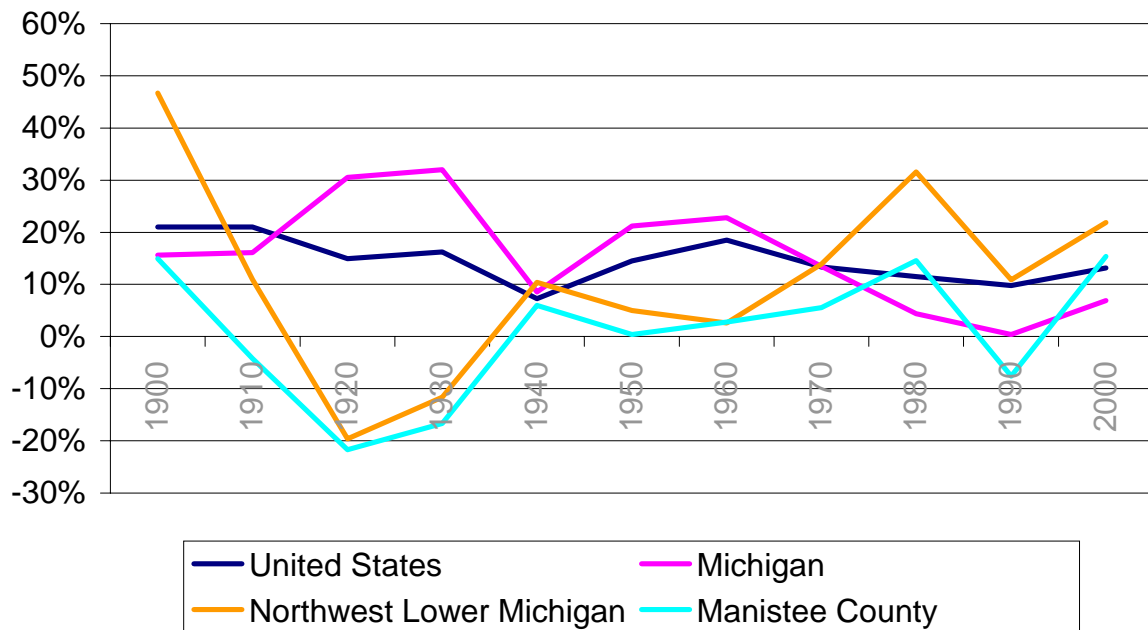
	United States	Michigan	Northwest Lower Michigan	Manistee County
1890 Census	62,979,766	2,093,890	101,107	24,230
1900 Census	76,212,168	2,420,982	148,317	27,856
1910 Census	92,228,496	2,810,173	164,600	26,688
1920 Census	106,021,537	3,668,412	132,273	20,899
1930 Census	123,202,624	4,842,325	116,900	17,409
1940 Census	132,164,569	5,256,106	129,031	18,450
1950 Census	151,325,798	6,371,766	135,488	18,524
1960 Census	179,323,175	7,823,194	139,017	19,042
1970 Census	203,211,926	8,875,083	158,333	20,094
1980 Census	226,545,805	9,262,078	208,286	23,019
1990 Census	248,709,873	9,295,297	230,962	21,265
2000 Census	281,421,906	9,938,444	281,468	24,527

Source: U.S. Census Bureau.

Total Population cont.

- Since 1890, the percent change of Manistee County’s total population from year to year has somewhat mirrored that of the Northwest Lower Michigan Region.
- Recent growth trends suggest that Manistee County’s percentage growth will be higher than that of Michigan, but lower than the rest of the Northwest Lower Michigan Region in the coming years.
- The loss of population from 1890—1920 in Manistee County and in the Northwest Lower Michigan Region may best be understood by changes in the national economy during that same time span. As the nation transformed from an agrarian economy to an industrialized economy, many rural areas experienced a decrease in their populations; whereas, urban county populations typically increased.

Chart 1: Percent Change of Total Population, 1890–2000



Source: U.S. Census Bureau.

Sex and Age

- Manistee County gained a greater amount of male residents than female residents from 1990-2000.
- The two age demographics that saw the highest percentage of growth from 1990-2000 were those aged 45 to 54 and 85 years and over. An aging population is typical for the Northwest Lower Michigan region.
- Negative growth was experienced in the under 5 years and 25-34 years age demographics from 1990—2000.
- In 2000, the median age in Manistee County was 41.5.

Table 2: Total Population by Age and Sex, Manistee County 1990–2000

	2000 Census		Percent Change 1990-2000	1990 Census	
	Number	Percent		Number	Percent
Male	12,470	50.8	21.2%	10,290	48.4
Female	12,057	49.2	9.9%	10,975	51.6
Under 5 years	1,303	5.3	-1.1%	1,317	6.2
5 to 9 years	1,504	6.1	4.6%	1,438	6.8
10 to 14 years	1,686	6.9	14.4%	1,474	6.9
15 to 19 years	1,607	6.6	17.1%	1,372	6.5
20 to 24 years	1,086	4.4	3.7%	1,047	4.9
25 to 34 years	2,738	11.2	-7.2%	2,951	13.9
35 to 44 years	3,723	15.2	21.3%	3,069	14.4
45 to 54 years	3,643	14.9	56.8%	2,324	10.9
55 to 59 years	1,441	5.9	31%	1,100	5.2
60 to 64 years	1,361	5.5	6.7%	1,276	6
65 to 74 years	2,408	9.8	10.8%	2,173	10.2
75 to 84 years	1,468	6	8.4%	1,354	6.4
85 years and over	559	2.3	51.1%	370	1.7

Source: U.S. Census Bureau.

Race

- The Manistee County population is predominately white, according to the 2000 Census.
- While Census 2000 data cannot be compared to Census 1990 data statistically*, the total number of those reporting to the Census Bureau as “non-white” in Manistee County have increased.

Table 3: Total Population by Race, Manistee County 1990–2000

	2000 Census		1990 Census	
	Number	Percent	Number	Percent
White	23,095	94.2%	20,851	98.1%
Black or African American	399	1.6%	54	0.3%
American Indian and Alaska Native	319	1.3%	189	0.9%
Hispanic/Latino (of any race)	639	2.6%	323	1.5%

Source: U.S. Census Bureau.

*2000 Census race data is not comparable to 1990 Census race data because the 2000 Census survey allowed the selection of more than one race while the 1990 Census survey did not.

Incoming Migration

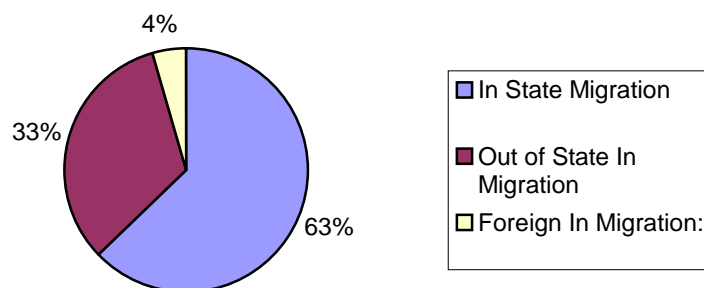
Northwest Lower Michigan

About the Data

Using the Public Use Microdata Samples (PUMS) from the 2000 U.S. Census Bureau, it is possible to determine where people are migrating from and the demographic characteristics of those people. It is important to note that for the data in this section, the designated PUMS area for Northwest Lower Michigan Region of Antrim, Benzie, Charlevoix, Emmet, Grand Traverse, Kalkaska, Manistee, Missaukee, and Wexford Counties. While the data are not specific to Manistee County, they do offer some insights on where people are coming from.

- From 1995 – 2000, of the 49,962 people who moved to the Northwest Lower Michigan Region 63% were moving from within Michigan.
- Approximately 45% of the out of state incoming migration came from Texas (10.9%), Illinois (9.7%), Florida (8.9%), California (8.4%), and Ohio (6.9%).

Chart 2: Incoming Migration Population by Original Geography of Residence, Northwest Lower Michigan 1995–2000



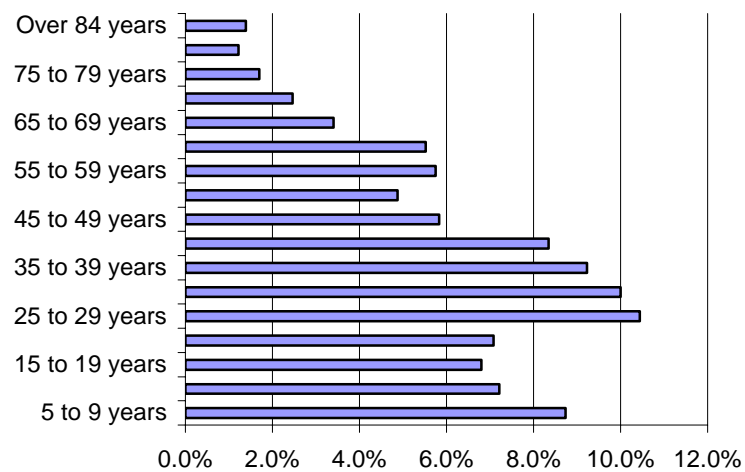
Source: U.S. Census Bureau. PUMA Areas 00400 and 01600. 2000.

Incoming Migration cont.

Northwest Lower Michigan

- Of those who moved to the Northwest Lower Michigan Region between 1995 – 2000, 59.5% of the incoming population was under the age of 39.
- In the Northwest Lower Michigan Region, 20.4% of the incoming population during 1995 – 2000 was between the ages of 25 – 35.

Chart 3: Percentage of Incoming Population by Age, Northwest Lower Michigan 1995–2000



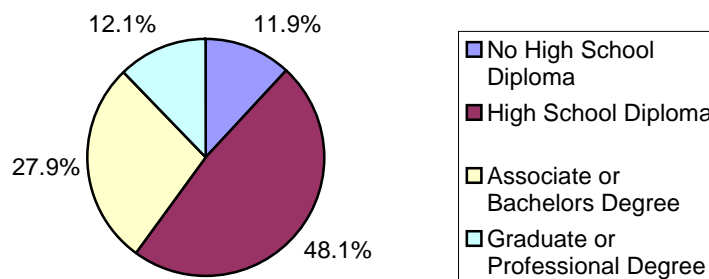
Source: U.S. Census Bureau. PUMA Area 00400 and 01600. 2000.

Incoming Migration cont.

Northwest Lower Michigan

- As our economy becomes increasingly more reliant on knowledge workers, there will be an increased need for workers with higher levels of educational attainment.
- 40% of the incoming population between 1995 – 2000 had an associates degree or higher.
- In the 2000 Census, 21% of Manistee County's held an associates degree or higher. 31.6% of the population in the Northwest Lower Michigan Region held an associates degree or higher. In Michigan, 28.8% of the population held an associates degree or higher.

Chart 4: Percentage of Incoming Population by Educational Attainment, Northwest Lower Michigan 1995–2000



Source: U.S. Census Bureau. PUMA Area 00400 and 01600. 2000.

Population Forecast

- Manistee County’s total population is expected to grow over the next 25 years. However, it is expected to grow at less than half the rate of Northwest Lower Michigan.
- Manistee County is similar to many other counties in the Northwest Lower Michigan Region, Manistee County’s median age is expected to rise in the coming decades due to a decrease or slowed growth of those less than 24 years and an increase of those aged greater than 55 years.
- From 2005—2010, the age demographic 0 – 17 in Manistee County is expected to have negative growth of 3.5%.
- From 2010—2020, the age demographic 65—74 in Manistee County is expected to show the largest gains in terms of percentage and numbers in Manistee County.

Table 4: Forecasted Total Population by Age, 2005—2030

	Year				Percent Change		
	2005	2010	2020	2030	2000-2010	2010-2020	2020-2030
Total Population	25,667	26,145	27,123	27,822	6.2%	3.7%	2.6%
Age 0 to 4 years	1,344	1,338	1,371	1,285	2.0%	2.5%	-6.3%
Age 5 to 15 years	3,433	3,286	3,228	3,204	-7.2%	-1.8%	-0.7%
Age 16 to 17 years	723	630	610	623	-3.1%	-3.2%	2.1%
Age 18 to 24 years	2,138	2,218	1,944	1,883	20.8%	-12.4%	-3.1%
Age 25 to 34 years	2,853	2,956	3,140	2,829	4.0%	6.2%	-9.9%
Age 35 to 44 years	3,964	3,770	3,765	3,933	-4.4%	-0.1%	4.5%
Age 45 to 54 years	3,772	3,994	3,791	3,793	16.0%	-5.1%	0.1%
Age 55 to 64 years	2,987	3,329	3,839	3,666	26.9%	15.3%	-4.5%
Age 65 to 74 years	2,270	2,310	2,958	3,456	-3.7%	28.1%	16.8%
Age 75 to 84 years	1,592	1,669	1,688	2,239	13.5%	1.1%	32.6%
Age 85 and older	591	645	789	911	16.2%	22.3%	15.5%

Source: "Economic & Demographic Outlook for Michigan and Its Counties to the Year 2030," prepared for the Statewide Model Unit, Bureau of Transportation Planning, Michigan Department of Transportation, by the Institute of Labor and Industrial Relations, University of Michigan, July 2003.

Selected Population Data for Manistee County Townships & Places

Arcadia Township

Table 5: Total Population by Age and Sex, 1990–2000

	2000 Census			1990 Census	
	Number	Percent	Percent Change 1990 - 2000	Number	Percent
Total population	621	100	12.3%	553	100
SEX AND AGE					
Male	290	46.7	1.8%	285	51.5
Female	331	53.3	23.5%	268	48.5
Under 5 years	26	4.2	13%	23	4.2
5 to 9 years	40	6.4	37.9%	29	5.2
10 to 14 years	33	5.3	10%	30	5.4
15 to 19 years	30	4.8	25%	24	4.3
20 to 24 years	13	2.1	-59.4%	32	5.8
25 to 34 years	56	9	-11.1%	63	11.4
35 to 44 years	75	12.1	-1.3%	76	13.7
45 to 54 years	97	15.6	73.2%	56	10.1
55 to 59 years	43	6.9	10.3%	39	7.1
60 to 64 years	58	9.3	31.8%	44	8
65 to 74 years	105	16.9	38.2%	76	13.7
75 to 84 years	37	6	-24.5%	49	8.9
85 years and over	8	1.3	-33.3%	12	2.2

Source: U.S. Census Bureau.

Selected Population Data for Manistee County Townships & Places

Bear Lake Township

Table 6: Total Population by Age and Sex, 1990–2000

	2000 Census			1990 Census	
	Number	Percent	Percent Change 1990 - 2000	Number	Percent
Total population	1,587	100	11.8%	1,419	100
SEX AND AGE					
Male	799	50.3	18.4%	675	47.6
Female	788	49.7	5.9%	744	52.4
Under 5 years	81	5.1	11%	73	5.1
5 to 9 years	130	8.2	21.5%	107	7.5
10 to 14 years	109	6.9	-6%	116	8.2
15 to 19 years	105	6.6	22.1%	86	6.1
20 to 24 years	59	3.7	-18.1%	72	5.1
25 to 34 years	165	10.4	-22.2%	212	14.9
35 to 44 years	255	16.1	30.1%	196	13.8
45 to 54 years	215	13.5	31.1%	164	11.6
55 to 59 years	96	6	31.5%	73	5.1
60 to 64 years	100	6.3	29.9%	77	5.4
65 to 74 years	145	9.1	15.1%	126	8.9
75 to 84 years	85	5.4	-12.4%	97	6.8
85 years and over	42	2.6	110%	20	1.4

Source: U.S. Census Bureau.

Selected Population Data for Manistee County Townships & Places

Brown Township

Table 7: Total Population by Age and Sex, 1990–2000

	2000 Census			1990 Census	
	Number	Percent	Percent Change 1990 - 2000	Number	Percent
Total population	712	100	21.1%	588	100
SEX AND AGE					
Male	361	50.7	22.4%	295	50.2
Female	351	49.3	19.8%	293	49.8
Under 5 years	36	5.1	0%	36	6.1
5 to 9 years	39	5.5	-17%	47	8
10 to 14 years	64	9	12.3%	57	9.7
15 to 19 years	45	6.3	32.4%	34	5.8
20 to 24 years	25	3.5	4.2%	24	4.1
25 to 34 years	51	7.2	-29.2%	72	12.2
35 to 44 years	114	16	-0.9%	115	19.6
45 to 54 years	132	18.5	71.4%	77	13.1
55 to 59 years	40	5.6	60%	25	4.3
60 to 64 years	43	6	152.9%	17	2.9
65 to 74 years	63	8.8	10.5%	57	9.7
75 to 84 years	39	5.5	95%	20	3.4
85 years and over	21	2.9	200%	7	1.2

Source: U.S. Census Bureau.

Selected Population Data for Manistee County Townships & Places

Cleon Township

Table 8: Total Population by Age and Sex, 1990–2000

	2000 Census			1990 Census	
	Number	Percent	Percent Change 1990 - 2000	Number	Percent
Total population	932	100	30.7%	713	100
SEX AND AGE					
Male	493	52.9	31.1%	376	52.7
Female	439	47.1	30.3%	337	47.3
Under 5 years	61	6.5	13%	54	7.6
5 to 9 years	65	7	16.1%	56	7.9
10 to 14 years	76	8.2	58.3%	48	6.7
15 to 19 years	75	8	23%	61	8.6
20 to 24 years	48	5.2	11.6%	43	6
25 to 34 years	121	13	12%	108	15.1
35 to 44 years	153	16.4	30.8%	117	16.4
45 to 54 years	147	15.8	119.4%	67	9.4
55 to 59 years	44	4.7	63%	27	3.8
60 to 64 years	41	4.4	20.6%	34	4.8
65 to 74 years	61	6.5	-4.7%	64	9
75 to 84 years	34	3.6	9.7%	31	4.3
85 years and over	6	0.6	100%	3	0.4

Source: U.S. Census Bureau.

Selected Population Data for Manistee County Townships & Places

Dickson Township

Table 9: Total Population by Age and Sex, 1990–2000

	2000 Census			1990 Census	
	Number	Percent	Percent Change 1990 - 2000	Number	Percent
Total population	929	100	26.4%	735	100
SEX AND AGE					
Male	472	50.8	31.8%	358	48.7
Female	457	49.2	21.2%	377	51.3
Under 5 years	56	6	19.1%	47	6.4
5 to 9 years	63	6.8	57.5%	40	5.4
10 to 14 years	60	6.5	53.8%	39	5.3
15 to 19 years	68	7.3	28.3%	53	7.2
20 to 24 years	30	3.2	15.4%	26	3.5
25 to 34 years	99	10.7	13.8%	87	11.8
35 to 44 years	126	13.6	20%	105	14.3
45 to 54 years	160	17.2	61.6%	99	13.5
55 to 59 years	61	6.6	1.7%	60	8.2
60 to 64 years	59	6.4	0%	59	8
65 to 74 years	99	10.7	50%	66	9
75 to 84 years	41	4.4	0%	41	5.6
85 years and over	7	0.8	-46.2%	13	1.8

Source: U.S. Census Bureau.

Selected Population Data for Manistee County Townships & Places

Filer Charter Township

Table 10: Total Population by Age and Sex, 1990–2000

	2000 Census			1990 Census	
	Number	Percent	Percent Change 1990 - 2000	Number	Percent
Total population	2,208	100	12.3%	1,966	100
SEX AND AGE					
Male	1,108	50.2	14.2%	970	49.3
Female	1,100	49.8	10.4%	996	50.7
Under 5 years	105	4.8	-13.9%	122	6.2
5 to 9 years	107	4.8	-25.7%	144	7.3
10 to 14 years	179	8.1	46.7%	122	6.2
15 to 19 years	164	7.4	30.2%	126	6.4
20 to 24 years	66	3	-32.7%	98	5
25 to 34 years	185	8.4	-21.3%	235	12
35 to 44 years	330	14.9	2.2%	323	16.4
45 to 54 years	359	16.3	53.4%	234	11.9
55 to 59 years	140	6.3	17.6%	119	6.1
60 to 64 years	145	6.6	5.1%	138	7
65 to 74 years	263	11.9	42.2%	185	9.4
75 to 84 years	135	6.1	40.6%	96	4.9
85 years and over	30	1.4	25%	24	1.2

Source: U.S. Census Bureau.

Selected Population Data for Manistee County Townships & Places

Manistee Township

Table 11: Total Population by Age and Sex, 1990–2000

	2000 Census			1990 Census	
	Number	Percent	Percent Change 1990 - 2000	Number	Percent
Total population	3,764	100	27.5%	2,952	100
SEX AND AGE					
Male	2,210	58.7	53.3%	1,442	48.8
Female	1,554	41.3	2.9%	1,510	51.2
Under 5 years	137	3.6	-21.3%	174	5.9
5 to 9 years	161	4.3	-15.7%	191	6.5
10 to 14 years	214	5.7	0.9%	212	7.2
15 to 19 years	232	6.2	18.4%	196	6.6
20 to 24 years	248	6.6	65.3%	150	5.1
25 to 34 years	562	14.9	42.3%	395	13.4
35 to 44 years	668	17.7	53.2%	436	14.8
45 to 54 years	539	14.3	35.8%	397	13.4
55 to 59 years	225	6	50%	150	5.1
60 to 64 years	188	5	1.6%	185	6.3
65 to 74 years	292	7.8	18.7%	246	8.3
75 to 84 years	187	5	16.9%	160	5.4
85 years and over	111	2.9	85%	60	2

Source: U.S. Census Bureau.

Selected Population Data for Manistee County Townships & Places

Maple Grove Township

Table 12: Total Population by Age and Sex, 1990–2000

	2000 Census			1990 Census	
	Number	Percent	Percent Change 1990 - 2000	Number	Percent
Total population	1,285	100	14.4%	1,123	100
SEX AND AGE					
Male	654	50.9	18.7%	551	49.1
Female	631	49.1	10.3%	572	50.9
Under 5 years	81	6.3	2.5%	79	7
5 to 9 years	79	6.1	-16%	94	8.4
10 to 14 years	100	7.8	16.3%	86	7.7
15 to 19 years	102	7.9	34.2%	76	6.8
20 to 24 years	58	4.5	11.5%	52	4.6
25 to 34 years	150	11.7	-2.6%	154	13.7
35 to 44 years	186	14.5	5.1%	177	15.8
45 to 54 years	200	15.6	115.1%	93	8.3
55 to 59 years	70	5.4	42.9%	49	4.4
60 to 64 years	67	5.2	11.7%	60	5.3
65 to 74 years	100	7.8	-9.1%	110	9.8
75 to 84 years	64	5	-15.8%	76	6.8
85 years and over	28	2.2	64.7%	17	1.5

Source: U.S. Census Bureau.

Selected Population Data for Manistee County Townships & Places

Marilla Township

Table 13: Total Population by Age and Sex, 1990–2000

	2000 Census			1990 Census	
	Number	Percent	Percent Change 1990 - 2000	Number	Percent
Total population	362	100	35.1%	268	100
SEX AND AGE					
Male	181	50	34.1%	135	50.4
Female	181	50	36.1%	133	49.6
Under 5 years	25	6.9	66.7%	15	5.6
5 to 9 years	20	5.5	5.3%	19	7.1
10 to 14 years	21	5.8	5%	20	7.5
15 to 19 years	22	6.1	22.2%	18	6.7
20 to 24 years	12	3.3	33.3%	9	3.4
25 to 34 years	34	9.4	36%	25	9.3
35 to 44 years	49	13.5	22.5%	40	14.9
45 to 54 years	73	20.2	121.2%	33	12.3
55 to 59 years	23	6.4	109.1%	11	4.1
60 to 64 years	27	7.5	17.4%	23	8.6
65 to 74 years	29	8	-21.6%	37	13.8
75 to 84 years	23	6.4	91.7%	12	4.5
85 years and over	4	1.1	-33.3%	6	2.2

Source: U.S. Census Bureau.

Selected Population Data for Manistee County Townships & Places

Norman Township

Table 14: Total Population by Age and Sex, 1990–2000

	2000 Census			1990 Census	
	Number	Percent	Percent Change 1990 - 2000	Number	Percent
Total population	1,676	100	41%	1,189	100
SEX AND AGE					
Male	863	51.5	41.2%	611	51.4
Female	813	48.5	40.7%	578	48.6
Under 5 years	91	5.4	9.6%	83	7
5 to 9 years	99	5.9	26.9%	78	6.6
10 to 14 years	123	7.3	25.5%	98	8.2
15 to 19 years	116	6.9	58.9%	73	6.1
20 to 24 years	54	3.2	-1.8%	55	4.6
25 to 34 years	152	9.1	-7.9%	165	13.9
35 to 44 years	262	15.6	74.7%	150	12.6
45 to 54 years	265	15.8	79.1%	148	12.4
55 to 59 years	137	8.2	85.1%	74	6.2
60 to 64 years	91	5.4	12.3%	81	6.8
65 to 74 years	200	11.9	70.9%	117	9.8
75 to 84 years	62	3.7	8.8%	57	4.8
85 years and over	24	1.4	140%	10	0.8

Source: U.S. Census Bureau.

Selected Population Data for Manistee County Townships & Places

Onekama Township

Table 15: Total Population by Age and Sex, 1990–2000

	2000 Census			1990 Census	
	Number	Percent	Percent Change 1990 - 2000	Number	Percent
Total population	1,514	100	19.6%	1,266	100
SEX AND AGE					
Male	763	50.4	25.3%	609	48.1
Female	751	49.6	14.3%	657	51.9
Under 5 years	78	5.2	36.8%	57	4.5
5 to 9 years	92	6.1	15%	80	6.3
10 to 14 years	89	5.9	8.5%	82	6.5
15 to 19 years	101	6.7	40.3%	72	5.7
20 to 24 years	59	3.9	20.4%	49	3.9
25 to 34 years	133	8.8	-6.3%	142	11.2
35 to 44 years	198	13.1	4.8%	189	14.9
45 to 54 years	199	13.1	49.6%	133	10.5
55 to 59 years	95	6.3	25%	76	6
60 to 64 years	104	6.9	10.6%	94	7.4
65 to 74 years	203	13.4	20.8%	168	13.3
75 to 84 years	111	7.3	18.1%	94	7.4
85 years and over	52	3.4	73.3%	30	2.4

Source: U.S. Census Bureau.

Selected Population Data for Manistee County Townships & Places

Pleasanton Township

Table 16: Total Population by Age and Sex, 1990–2000

	2000 Census			1990 Census	
	Number	Percent	Percent Change 1990 - 2000	Number	Percent
Total population	817	100	42.6%	573	100
SEX AND AGE					
Male	406	49.7	51.5%	268	46.8
Female	411	50.3	34.8%	305	53.2
Under 5 years	51	6.2	121.7%	23	4
5 to 9 years	66	8.1	69.2%	39	6.8
10 to 14 years	46	5.6	31.4%	35	6.1
15 to 19 years	39	4.8	44.4%	27	4.7
20 to 24 years	30	3.7	87.5%	16	2.8
25 to 34 years	93	11.4	32.9%	70	12.2
35 to 44 years	106	13	39.5%	76	13.3
45 to 54 years	92	11.3	31.4%	70	12.2
55 to 59 years	45	5.5	40.6%	32	5.6
60 to 64 years	54	6.6	8%	50	8.7
65 to 74 years	116	14.2	30.3%	89	15.5
75 to 84 years	61	7.5	60.5%	38	6.6
85 years and over	18	2.2	125%	8	1.4

Source: U.S. Census Bureau.

Selected Population Data for Manistee County Townships & Places

Springdale Township

Table 17: Total Population by Age and Sex, 1990–2000

	2000 Census			1990 Census	
	Number	Percent	Percent Change 1990 - 2000	Number	Percent
Total population	730	100	46.6%	498	100
SEX AND AGE					
Male	373	51.1	45.7%	256	51.4
Female	357	48.9	47.5%	242	48.6
Under 5 years	47	6.4	62.1%	29	5.8
5 to 9 years	60	8.2	106.9%	29	5.8
10 to 14 years	35	4.8	12.9%	31	6.2
15 to 19 years	35	4.8	-16.7%	42	8.4
20 to 24 years	28	3.8	0%	28	5.6
25 to 34 years	91	12.5	42.2%	64	12.9
35 to 44 years	91	12.5	24.7%	73	14.7
45 to 54 years	121	16.6	101.7%	60	12
55 to 59 years	51	7	54.5%	33	6.6
60 to 64 years	45	6.2	21.6%	37	7.4
65 to 74 years	80	11	63.3%	49	9.8
75 to 84 years	39	5.3	85.7%	21	4.2
85 years and over	7	1	250%	2	0.4

Source: U.S. Census Bureau.

Selected Population Data for Manistee County Townships & Places

Stronach Township

Table 18: Total Population by Age and Sex, 1990–2000

	2000 Census			1990 Census	
	Number	Percent	Percent Change 1990 - 2000	Number	Percent
Total population	804	100	16.9%	688	100
SEX AND AGE					
Male	435	54.1	23.2%	353	51.3
Female	369	45.9	10.1%	335	48.7
Under 5 years	36	4.5	-20%	45	6.5
5 to 9 years	47	5.8	-17.5%	57	8.3
10 to 14 years	61	7.6	64.9%	37	5.4
15 to 19 years	52	6.5	33.3%	39	5.7
20 to 24 years	18	2.2	-40%	30	4.4
25 to 34 years	85	10.6	-15%	100	14.5
35 to 44 years	143	17.8	43%	100	14.5
45 to 54 years	131	16.3	61.7%	81	11.8
55 to 59 years	49	6.1	19.5%	41	6
60 to 64 years	54	6.7	-5.3%	57	8.3
65 to 74 years	89	11.1	32.8%	67	9.7
75 to 84 years	32	4	3.2%	31	4.5
85 years and over	7	0.9	133.3%	3	0.4

Source: U.S. Census Bureau.

Selected Population Data for Manistee County Townships & Places

Village of Bear Lake

Table 19: Total Population by Age and Sex, 1990–2000

	2000 Census			1990 Census	
	Number	Percent	Percent Change 1990 - 2000	Number	Percent
Total population	318	100	-6.2%	339	100
SEX AND AGE					
Male	160	50.3	-1.2%	162	47.8
Female	158	49.7	-10.7%	177	52.2
Under 5 years	14	4.4	7.7%	13	3.8
5 to 9 years	23	7.2	-39.5%	38	11.2
10 to 14 years	25	7.9	-19.4%	31	9.1
15 to 19 years	28	8.8	40%	20	5.9
20 to 24 years	17	5.3	-19%	21	6.2
25 to 34 years	35	11	-37.5%	56	16.5
35 to 44 years	45	14.2	2.3%	44	13
45 to 54 years	46	14.5	48.4%	31	9.1
55 to 59 years	12	3.8	-36.8%	19	5.6
60 to 64 years	10	3.1	-47.4%	19	5.6
65 to 74 years	30	9.4	42.9%	21	6.2
75 to 84 years	22	6.9	15.8%	19	5.6
85 years and over	11	3.5	57.1%	7	2.1

Source: U.S. Census Bureau.

Selected Population Data for Manistee County Townships & Places

Village of Copemish

Table 20: Total Population by Age and Sex, 1990–2000

	2000 Census			1990 Census	
	Number	Percent	Percent Change 1990 - 2000	Number	Percent
Total population	232	100	4.5%	222	100
SEX AND AGE					
Male	113	48.7	4.6%	108	48.6
Female	119	51.3	4.4%	114	51.4
Under 5 years	22	9.5	4.8%	21	9.5
5 to 9 years	18	7.8	157.1%	7	3.2
10 to 14 years	19	8.2	26.7%	15	6.8
15 to 19 years	16	6.9	-15.8%	19	8.6
20 to 24 years	13	5.6	-7.1%	14	6.3
25 to 34 years	34	14.7	9.7%	31	14
35 to 44 years	36	15.5	20%	30	13.5
45 to 54 years	22	9.5	0%	22	9.9
55 to 59 years	13	5.6	8.3%	12	5.4
60 to 64 years	8	3.4	-33.3%	12	5.4
65 to 74 years	18	7.8	-28%	25	11.3
75 to 84 years	10	4.3	-23.1%	13	5.9
85 years and over	3	1.3	200%	1	0.5

Source: U.S. Census Bureau.

Selected Population Data for Manistee County Townships & Places

Village of Eastlake

Table 21: Total Population by Age and Sex, 1990–2000

	2000 Census			1990 Census*	
	Number	Percent	Percent Change 1990 - 2000	Number	Percent
Total population	441	100	0	0	0
SEX AND AGE					
Male	211	47.8	0	0	0
Female	230	52.2	0	0	0
Under 5 years	15	3.4	0	0	0
5 to 9 years	22	5	0	0	0
10 to 14 years	32	7.3	0	0	0
15 to 19 years	33	7.5	0	0	0
20 to 24 years	22	5	0	0	0
25 to 34 years	49	11.1	0	0	0
35 to 44 years	71	16.1	0	0	0
45 to 54 years	61	13.8	0	0	0
55 to 59 years	33	7.5	0	0	0
60 to 64 years	28	6.3	0	0	0
65 to 74 years	53	12	0	0	0
75 to 84 years	14	3.2	0	0	0
85 years and over	8	1.8	0	0	0

Source: U.S. Census Bureau.

*The Village of Eastlake was not included in the 1990 Census.

Selected Population Data for Manistee County Townships & Places

Village of Kaleva

Table 22: Total Population by Age and Sex, 1990–2000

	2000 Census			1990 Census	
	Number	Percent	Percent Change 1990 - 2000	Number	Percent
Total population	509	100	5.2%	484	100
SEX AND AGE					
Male	244	47.9	7%	228	47.1
Female	265	52.1	3.5%	256	52.9
Under 5 years	37	7.3	8.8%	34	7
5 to 9 years	30	5.9	-25%	40	8.3
10 to 14 years	42	8.3	31.3%	32	6.6
15 to 19 years	43	8.4	38.7%	31	6.4
20 to 24 years	28	5.5	16.7%	24	5
25 to 34 years	69	13.6	3%	67	13.8
35 to 44 years	66	13	3.1%	64	13.2
45 to 54 years	77	15.1	120%	35	7.2
55 to 59 years	24	4.7	60%	15	3.1
60 to 64 years	18	3.5	-21.7%	23	4.8
65 to 74 years	32	6.3	-45.8%	59	12.2
75 to 84 years	30	5.9	-38.8%	49	10.1
85 years and over	13	2.6	18.2%	11	2.3

Source: U.S. Census Bureau.

Selected Population Data for Manistee County Townships & Places

City of Manistee

Table 23: Total Population by Age and Sex, 1990–2000

	2000 Census			1990 Census	
	Number	Percent	Percent Change 1990 - 2000	Number	Percent
Total population	6,586	100	-2.2%	6,734	100
SEX AND AGE					
Male	3,062	46.5	-1.4%	3,106	46.1
Female	3,524	53.5	-2.9%	3,628	53.9
Under 5 years	392	6	-14.2%	457	6.8
5 to 9 years	436	6.6	1.9%	428	6.4
10 to 14 years	476	7.2	3.3%	461	6.8
15 to 19 years	421	6.4	-5.4%	445	6.6
20 to 24 years	338	5.1	-6.9%	363	5.4
25 to 34 years	761	11.6	-28.1%	1,059	15.7
35 to 44 years	967	14.7	7.9%	896	13.3
45 to 54 years	913	13.9	49.2%	612	9.1
55 to 59 years	322	4.9	10.7%	291	4.3
60 to 64 years	285	4.3	-10.9%	320	4.8
65 to 74 years	563	8.5	-21.4%	716	10.6
75 to 84 years	518	7.9	-2.4%	531	7.9
85 years and over	194	2.9	25.2%	155	2.3

Source: U.S. Census Bureau.

Selected Population Data for Manistee County Townships & Places

Village of Onekama

Table 24: Total Population by Age and Sex, 1990–2000

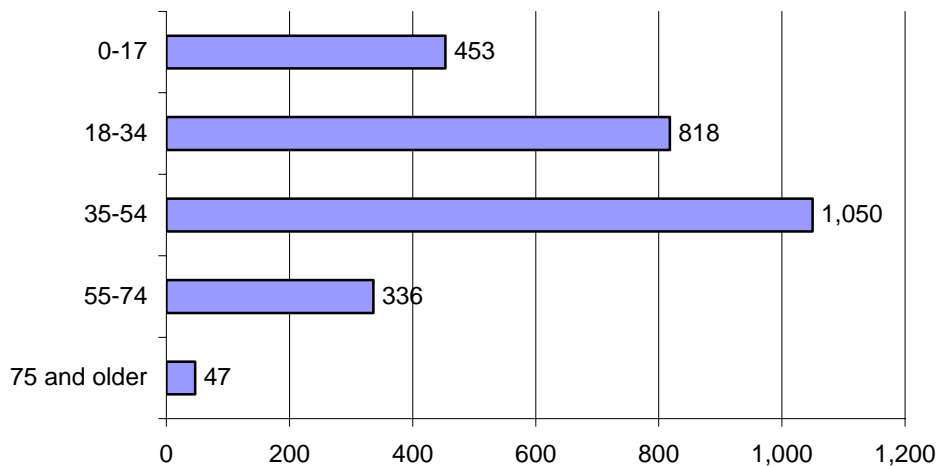
	2000 Census			1990 Census	
	Number	Percent	Percent Change 1990 - 2000	Number	Percent
Total population	647	100	25.6%	515	100
SEX AND AGE					
Male	346	53.5	39.5%	248	48.2
Female	301	46.5	12.7%	267	51.8
Under 5 years	29	4.5	26.1%	23	4.5
5 to 9 years	48	7.4	45.5%	33	6.4
10 to 14 years	46	7.1	48.4%	31	6
15 to 19 years	53	8.2	65.6%	32	6.2
20 to 24 years	35	5.4	66.7%	21	4.1
25 to 34 years	68	10.5	-4.2%	71	13.8
35 to 44 years	93	14.4	24%	75	14.6
45 to 54 years	77	11.9	54%	50	9.7
55 to 59 years	34	5.3	25.9%	27	5.2
60 to 64 years	31	4.8	-8.8%	34	6.6
65 to 74 years	67	10.4	-8.2%	73	14.2
75 to 84 years	54	8.3	58.8%	34	6.6
85 years and over	12	1.9	9.1%	11	2.1

Source: U.S. Census Bureau.

Little River Band of Ottawa Indians

- The Little River Band of Ottawa Indians' (LRBOI) membership comprises of approximately 3,058 individuals living throughout the United States. In 2001, it was estimated that approximately 67% of the LRBOI population lived in Michigan.
- In 2001, the LRBOI's total population in Michigan was 1,863 with approximately 13.5% living in Manistee County (252 individuals). Muskegon County held the largest number of LRBOI individuals in the state with 490 people in 2001.
- In Manistee County, 78% of the LRBOI population lived within the City of Manistee zip code (49660).
- In 2001, the largest age group within the LRBOI Tribe was those aged 35-54.

Chart 5: LRBOI Total Population by Age Group, 2001



Source: LRBOI Tribal Census Project. 2001.